

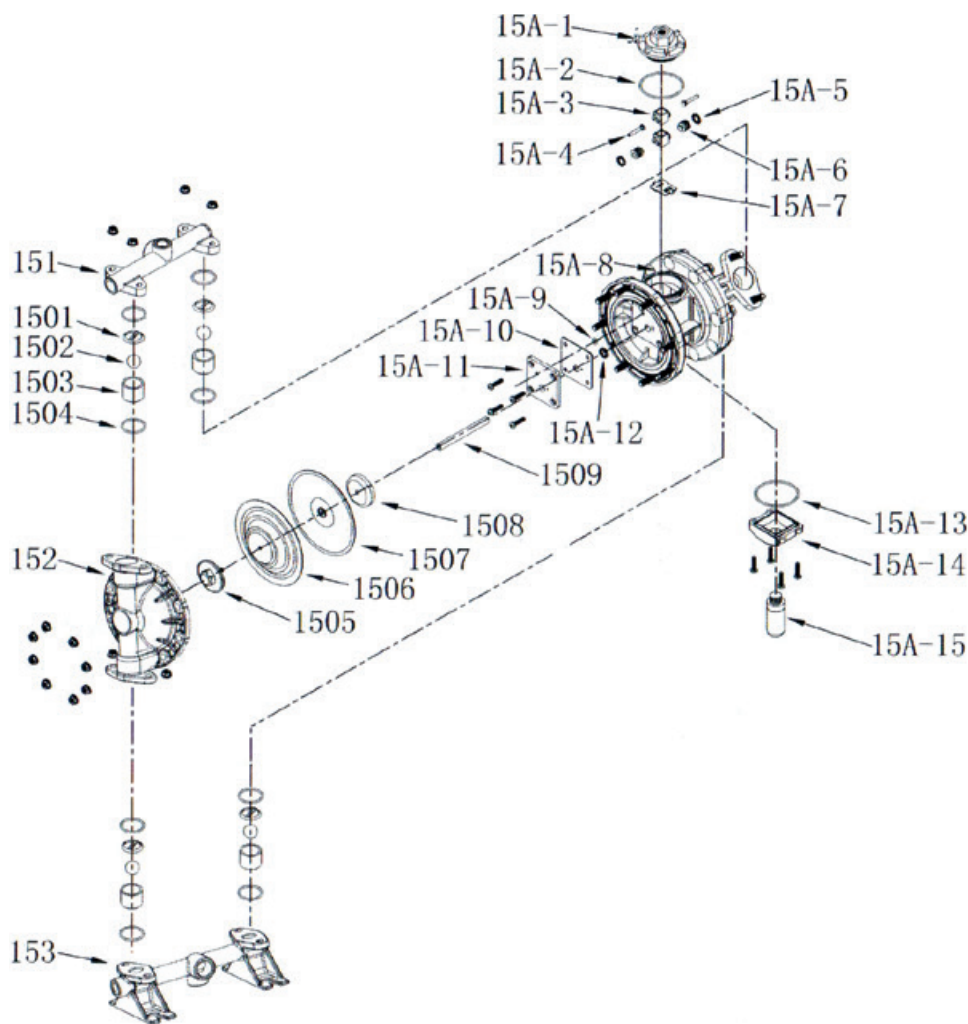
PIG Pump Features

- Indisputably food grade
- Extremely durable, strong and robust structure
- This pump is rated for up to 120psi
(You should not exceed 65 psi in this application)
- Maximum temperature is 120°C
- Filtration as low as -100°C and hot carbon scrub safe up to 120°C
- Does NOT require a bypass valve
- Worry-free idling capability
(Competitors’ positive displacement pumps are damaged by idling)
- Simple operation
- Easy disassembly for repairs

Troubleshooting Guide

Symptom	Cause	Solution
Pump is running but nothing is coming out	Issue with the ball in the pump’s check valve	Contact Summit Research for replacement part
Pump does not have suction	Air compressor is not attached properly	Reconnect
	T-Valve is not in the correct position.	Turn valve handle to the proper position. Further explanation: tinyurl.com/slmp-t-valve
Pump does not cycle or stops after one cycle	Air valve is stuck or dirty	Clean the Air Valve
	Valve ball is severely worn and is wedged in its seat or manifold	Contact Summit Research for replacement ball and seat
Lots of air bubbles in the solution	Mouth of the input hose is not fully immersed in solution or the hose is clogged.	Clean hose and make sure the mouth of the hose is fully in the solution
	Diaphragm is ruptured	Contact Summit Research for replacement part
	Loose inlet manifold, damaged seal between manifold and seat or damaged o-ring.	Tighten or contact Summit Research for replacement part
Pump operates erratically	Suction line is clogged	Inspect and clear
	Sticky or leaking check valve balls	Clean or replace
	Restricted exhaust	Remove restriction
	Diaphragm is ruptured	Contact Summit Research for replacement part

Pump Anatomy



Fluid Section Parts List

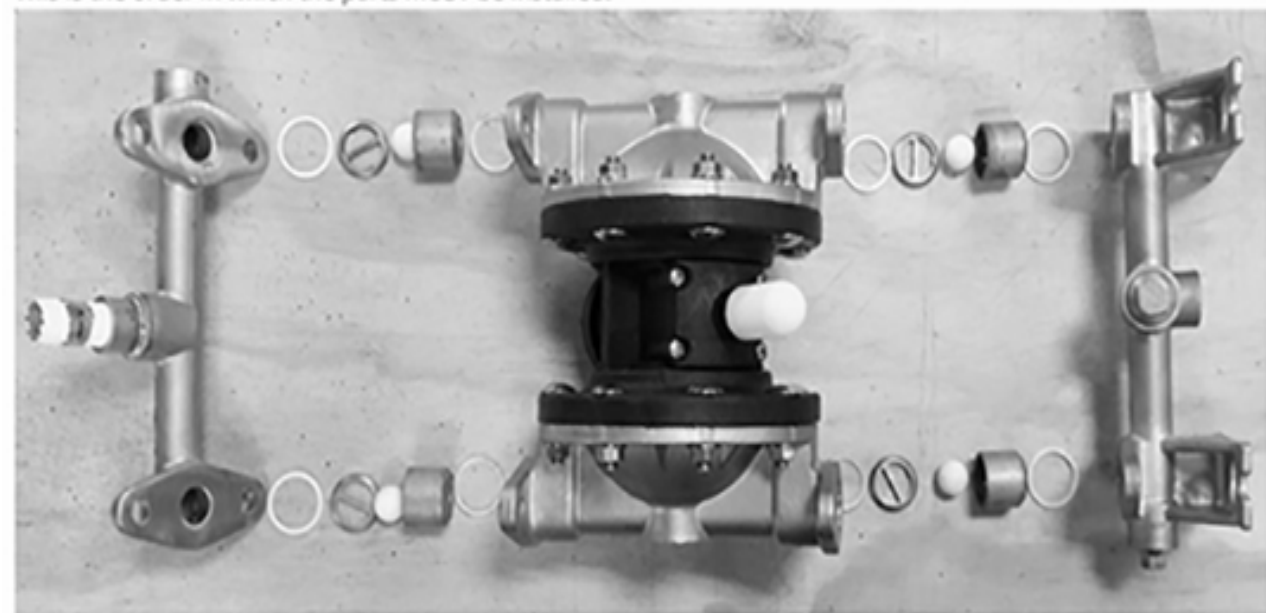
Number	Parts Name	Qty
151	Outlet Manifold	1
152	Fluid Cover	2
153	Inlet Manifold	1
153-1	Footing	2
1501	Baffle Booth	4
1502	Vavle Ball	4
1503	Valve Seat	4
1504	Seat O-ring	8
1505	Plate	2
1506	Teflon Diaphragm	2
1507	Rubber Diaphragm	2
1508	Inner Plate	2
1509	Central Rod	1

Air Motor Parts List

Number	Parts Name	Qty
15A-1	Valve Chamber Cover	1
15A-2	Valve Chamber Cover O-ring	1
15A-3	Commutation Switch	2
15A-4	Commutation Pin	2
15A-5	Piston V-ring	2
15A-6	Piston	2
15A-7	SST Air Valve Plate	1
15A-8	Air Valve Body	1
15A-9	Commutation Pin O-ring	2
15A-10	Air Valve Plate	2
15A-11	Air Valve Plate Gasket	2
15A-12	Central Rod V-ring	2
15A-13	Muffler Base O-ring	1
15A-14	Muffler Base	1
15A-15	Muffler	1

How To Assemble The Air Pump

This is the order in which the parts MUST be installed.



This is how the stainless steel valve body goes together. The tapered edges will always seat against the white plastic seals. The white plastic seals will always be nested against the bottom of the bore of the diaphragm body and against the upper and lower manifolds.

